

EMERGENCY EXITS and ASSEMBLY AREA

ON BEING ADVISED OF
A BUILDING EVACUATION

"EVACUATE"

1. Comply with Building Emergency Controller/Warden's directions.

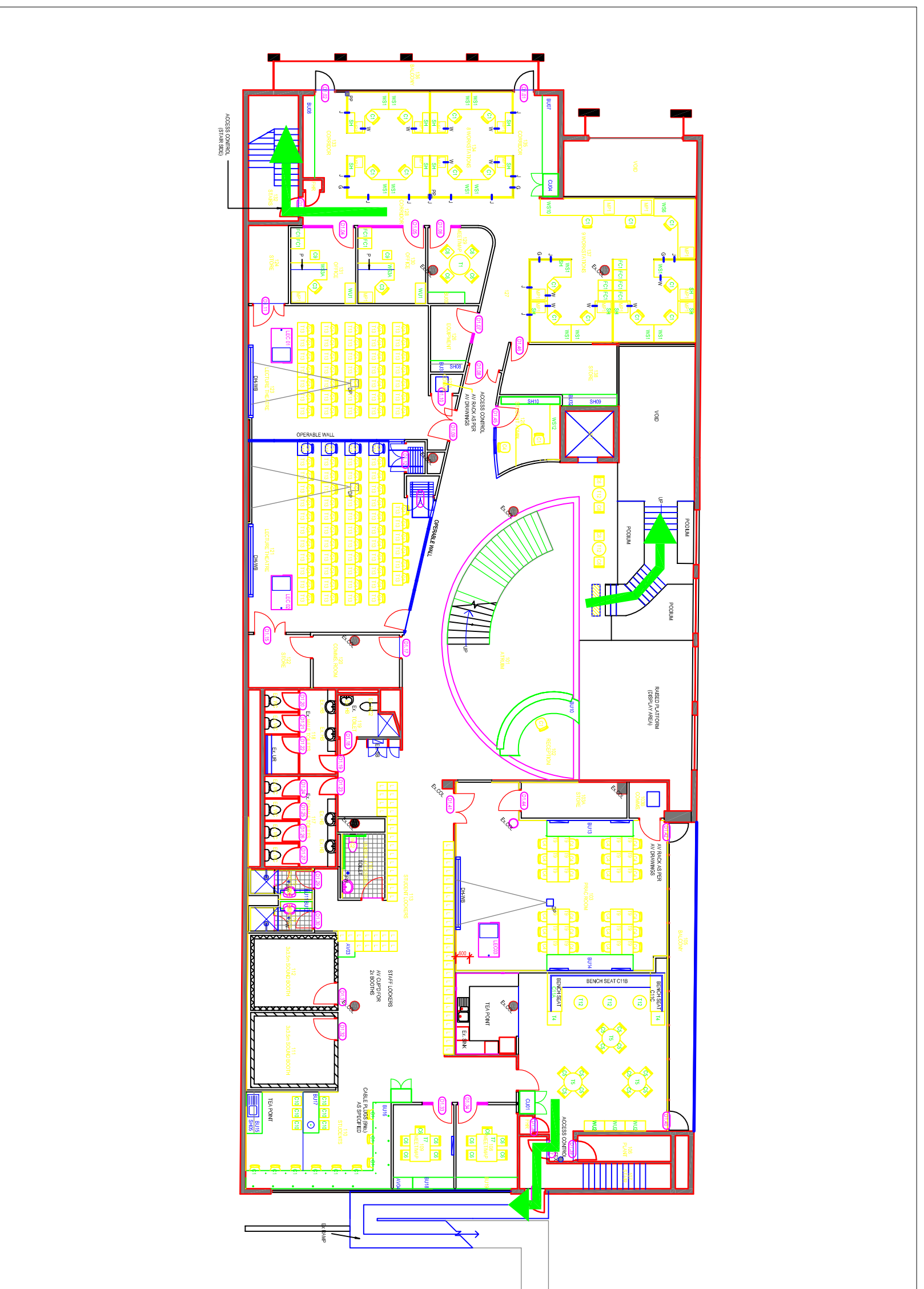
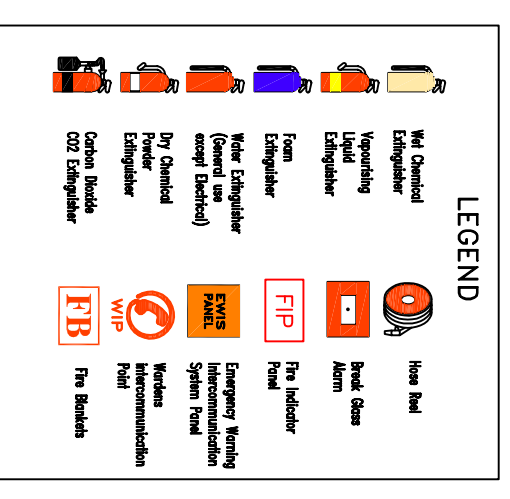
2. Exit Building via nearest, safe Emergency Exit.

Note: You may need to break Break Glass Alarm to open door.

3. Assist persons with disabilities.

4. Proceed to Emergency Assembly Area & remain there until advised by Warden or Emergency Services.

Know the location of
of all Fire Fighting
Equipment.



ASSEMBLY AREA
Swanston Street

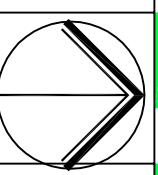


THE UNIVERSITY OF
MELBOURNE

PROPERTY AND CAMPUS SERVICES
ASSET DATA UNIT

Site & Zone
Building Name
Building No:
Floor or Level

Parkville
550 Swanston St
246
1st Floor



SCALE: N.T.S.
DATE: April '09
DRAWN: EHS Unit